

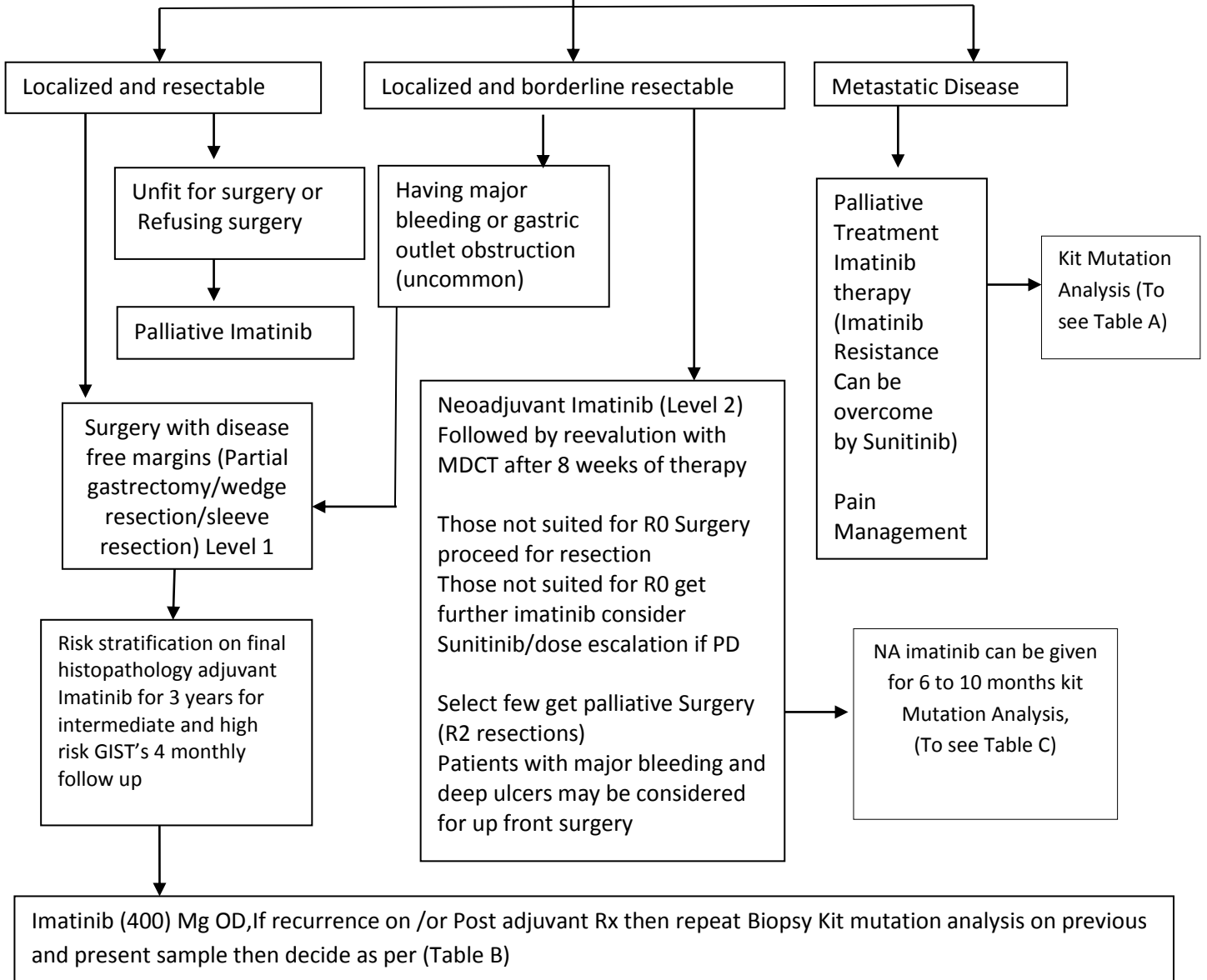
## GIST (Gastrointestinal Stromal Tumour)

Abdominal lump, Dyspepsia, Pain, Bleeding, Unexplained weight loss

Upper GI endoscopy with multiple (6-8) biopsies (lesions often submucosal)

GIST (look for C-kit/Dog1 positivity on IHC)

CECT scan thorax, abdomen and pelvis  
Pre anaesthetic evaluation  
Optional procedures  
PET-CT (suspected metastases) Desirable



Imatinib (400) Mg OD, If recurrence on /or Post adjuvant Rx then repeat Biopsy Kit mutation analysis on previous and present sample then decide as per (Table B)